



High Capacity Ground Anchors for Slope Stabilisation, Degendamm, Austria

Client: Austrian Government
Engineer: Hyder Consulting & Arup
Specialist Anchor Contractor: Keller Grundbau (Austria)
Specialist Consultant: SBMA Ltd

Overview

The largest Single Bore Multiple Anchors (SBMA) ever constructed were installed to support a large slope at Degendamm, Austria.

Project

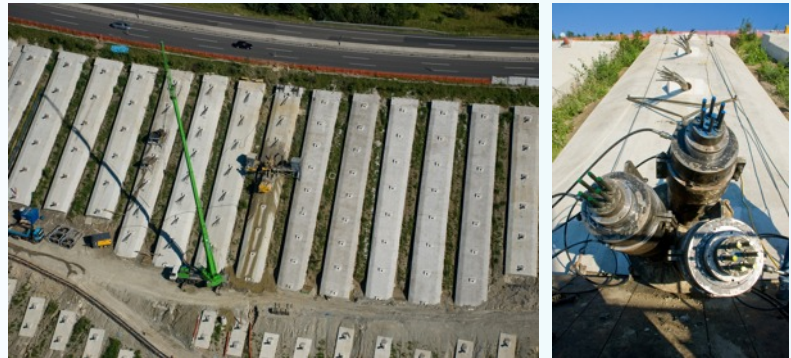
A recent example of the effective use of SBMA technology is highlighted in the prestigious Keller Group project undertaken on the A2 motorway between Graz and Vienna in Austria. This is one of an increasing number of schemes where the SBMA redesign deployed specialist techniques not included in the original specification to reduce overall programme time and costs.

Ground Conditions

Highly weathered rock.

Solution

In lieu of the 400 No. 1500kN working load anchors, the alternative bid to install 200 No. 3600kN working load SBMAs was accepted. The anchors were double corrosion protected in accordance with criteria stipulated in BS 8081:1989. This type of protection was necessary in order to correct previously inadequately protected areas beneath the anchor head.



Construction

Permanent, double corrosion protected SBMAs were installed for slope stabilisation works in weak rock.

Approximately 200 No. anchors with working loads circa 3800kN and overall length of 82m were installed. Each anchor comprised three unit anchors were 6.3m long incorporating 6No. 18mm diameter dyform strands.

SBMA Ltd

www.sbmasystems.com

devon.mothersille@sbmasystems.com

+44 (0) 7961 134 943

PO Box 342, Harrogate LDO, HG3 1YR, UK

Company Registration No: 4026709

VAT registration: VRN 788 994 822